

Lesson 5

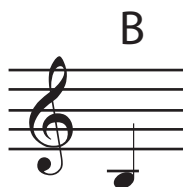
Common Notation

A string

"Fifth string"



Fifth String
Open String



Fifth String
Second Fret
(Second finger)



Fifth String
Third Fret
(Third Finger)



Eighth notes have:

- a solid head
- a stem pointing up or down
- one flag or one beam
- at the end of the stem

Eighth notes are always half as long as quarter notes.



Eighth rest



The very first measure is allowed to be less than a full measure.

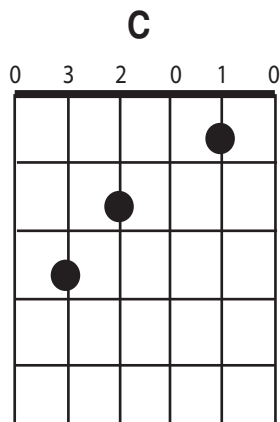
This can be called a **pick-up measure**, or **pick-up notes**.*

The very last measure plus the pickup measure must equal a full measure.



Common Time is 4/4 time.

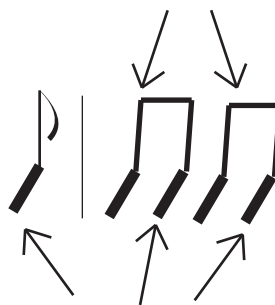
Chord Diagrams



Chord strums may also be written with stems, flags, or beams.

Strong down strum at beginning of beat.

Downbeat



Upbeat

Gentler up strum in middle of beat.

*learn more about pick-up notes: <http://cnx.org/content/m12717/latest/>