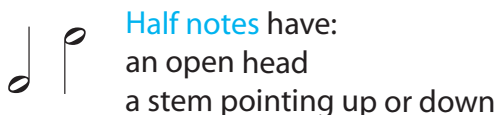


# Lesson 3

## Common Notation

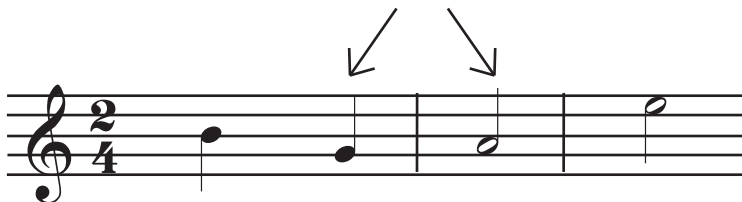
### G string

"Third string"



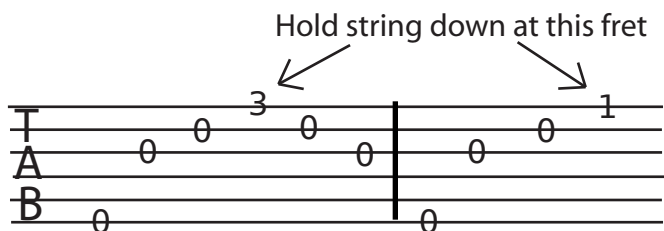
Half notes are always twice as long as quarter notes.\*  
Every measure must be filled with notes that add up to the amount in the time signature

Stems point up if note heads are below the middle line.



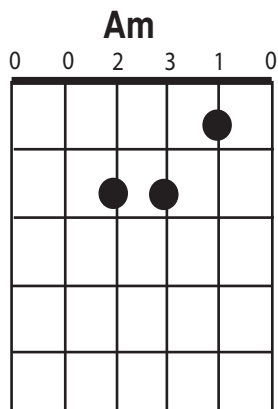
Every "two four" measure can have two quarter notes OR one half note (= two quarter notes).

## Tablature Notation

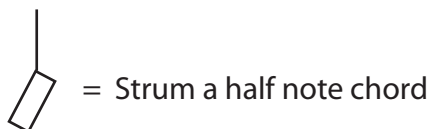


A number other than 0 on a tablature line means hold the string down at that fret while you pluck it.

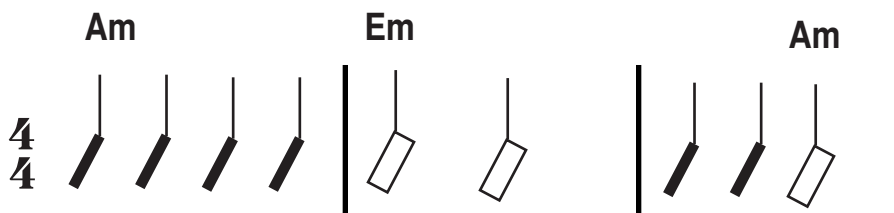
## Chord Diagrams



## Chord Symbols



Chord strums must also fill the right number of beats in every measure



\*learn more about note values: <http://cnx.org/content/m10945/latest/>