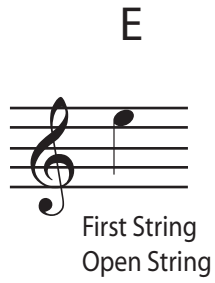


Lesson 1

Common Notation

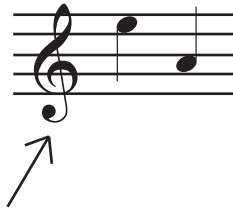
High E string

Highest-sounding
"First string"



Common notation is written on a five-line staff.*

Both common notation and tablature are read from left to right.



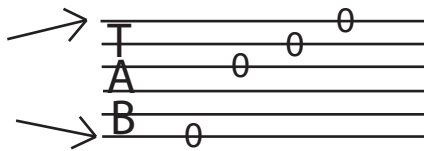
Treble clef symbol

Guitar music is usually written on a treble clef.^

Quarter notes have:
a solid head
a stem pointing up or down

Tablature Notation

Top line is First String,
(highest-sounding string)

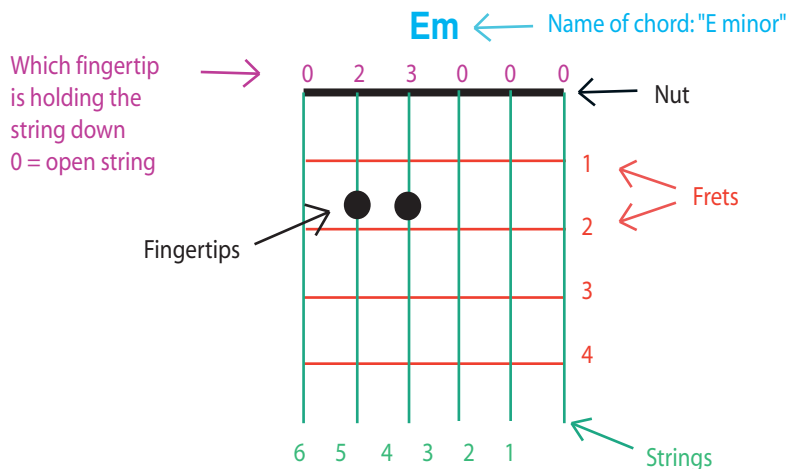


Bottom line is Sixth String
(lowest-sounding string)

Tablature notation is written on six lines.
Each line represents a string.
The top line is the first string.
"0" means pluck the open string.

Chord Diagrams

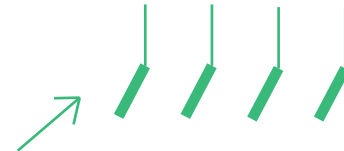
Chord Diagrams are "pictures" of
the strings being held down by fingertips.



Chord Symbols

This means play E minor chord.

Em



This means strum quarter note chords.

*learn more about the staff: <http://cnx.org/content/m10880/latest/>

^learn more about clefs: <http://cnx.org/content/m10941/latest/>